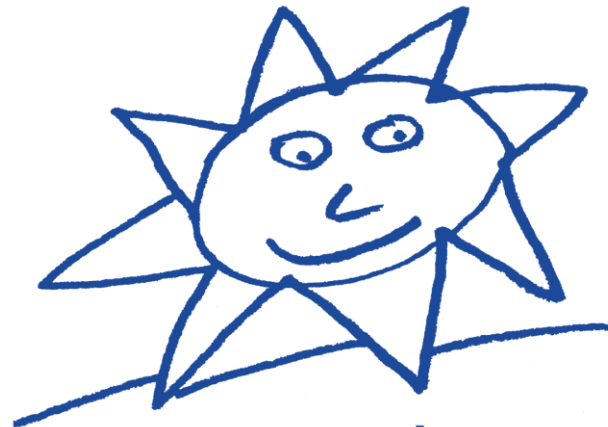


**St Nicholas school**

**Pupil Premium statement 2022-2023**



St.Nicholas  
S c h o o l

## What is Pupil Premium?

Pupil Premium was introduced by the Government to provide additional funding to address the gap in educational attainment and long-term economic well-being between socially disadvantaged children and young people compared to their peers. Socially disadvantaged pupils have been defined as pupils eligible for free school meals (FSM) and children who have been in care for at least 1 day

### Principles for supporting socially disadvantaged pupils:

- At St Nicholas School we ensure that teaching and learning opportunities meet the needs of **all** pupils.
- As all our pupils have Educational, Health and Care plans, they all belong to vulnerable groups. We ensure that appropriate provision is made for pupils who belong to vulnerable groups, this includes ensuring that the needs of socially disadvantaged pupils are specifically assessed and addressed, using specialists where necessary.
- In considering provision for socially disadvantaged pupils we recognise that not all pupils eligible for FSM will be socially disadvantaged. We also recognise that not all pupils who are socially disadvantaged are eligible for free school meals. This also includes children whose families have no recourse to public funds.
- Pupil Premium funding will be allocated based on the needs of different groups within the school which may not be met through existing resources. In some cases, it will be targeted at priority classes, groups or individuals.
- Children who receive Pupil Premium/ Pupil premium + are given priority access to visiting therapist and are usually seen individually.
- As much as our priority is the children at St Nicholas, we are aware of the benefits that Pupil Premium brings to the whole school community, in particular parents. Regular support, contact, advice and training is offered to help to further the wellbeing of families already under pressure and stress from caring for a child with additional needs.
- We believe all children should be able to access school activities and trips including the Year 6 residential regardless of their Parental financial situation.
- Pupil premium is calculated on the academic year September to July.

In November 2022 St Nicholas school has 246 pupils. 92 of these are eligible for pupil premium funding. This is approx. 37% of the school population.

There are 4 pupils who are eligible for Pupil premium plus. These children were previously looked after. There are 2 children currently in the care of the local authority.

In 2021- 22 9 children became eligible for Free school meals after the October census, they are not eligible for pupil premium until April 2023. This decreases the pupil premium by £12,465

**Funding allocation 2022-23**

<b>Funding allocation 2022-2023</b>	<b>Number</b>	<b>Amount of Funding</b>	
Number of Pupils on roll November 2022	246		
Number of Pupils eligible for FSM	<b>92</b>	£1,385per child	<b>Total £127,420</b>
Number of pupils who are Post Looked After	<b>4</b>	£2,410 per child	<b>Total £9,640</b>
Number of pupils who are currently in Local Authority care	<b>2</b>	£2,410 – released by the Virtual school therefore not counted in pupil premium total	TBC throughout the year at EPEP meetings
Number of Pupils whose parents currently employed in the armed services	<b>0</b>	0	
<i>Number of children who are not eligible for PP payments until April 2023</i>	<b>8</b>	12,465	12,465
Total Amount of Pupil Premium funding including children not eligible until 2023		£137,060	£137,060
<b>Actual amount of pupil premium funding received</b>		<b>124,595</b>	<b>124,595</b>

<b>Provision:</b>	<b>Approx. cost 2022</b>
<b>Speech and Language Therapist</b>	£12,000
<b>Parent engagement including coffee morning speakers and Makaton training for parents</b>	£1,000
<b>Additional Occupational Therapy</b>	£10,000
<b>OT equipment for pupils,</b>	£6,503
<b>Home School welfare support for PP pupils</b>	£12,000
<b>Play Therapy for Pupil Premium Plus pupils and other vulnerable children CMF Counselling</b>	£11,000
<b>Play therapy Croydon drop in 3 x terms</b>	£11,000
<b>Music Therapy Nordorff robins</b>	£11,000
<b>Drama therapy Roundabout</b>	£11,000
<b>ELSA supervision 180.00 x3</b>	£540
<b>ELSA resources</b>	£600
<b>Cover for ELSAs while on supervision</b>	£1,000
<b>Staff to carry out communication activities / cover for ELSA day Equivalent of full-time staff member + on costs</b>	£29,112
<b>Staff member to work 1-1, 1 session per week with PP+/ LAC children 6 pupils</b>	£4,000
<b>Provision for Year 6 pupils – trips/ residential</b>	£500
<b>Payment for SaLT Lead Therapist to train a Makaton Tutor training + cover costs</b>	£3,000
<b>Further Makaton training for in house SALTS</b>	£340
<b>Total</b>	<b>£124,595</b>